



## Improving Yield with Agronomic Science & Technology

Meridian Analytical Labs provides timely, accurate testing and cost-effective services through our affiliate and strategic partner labs, allowing you to make sound agronomic decisions. From feeds, to ag chemicals, to organic and commercial fertilizer analysis, Meridian has your production operation covered. Our Mound Valley location is convenient for sample drop-offs. Results are promptly reported to you via email, facsimile or US Postal Service, whichever is most convenient for you.

### Ag Testing Services Include:

- Feed Analysis** including NIRS, Grain and Forage, Dairy, Minerals, etc.
- Liquid Supplement & Molasses** including Brix, Fat & Acid, Propionic Acid, etc.
- Fats & Oils** - MIU-FFA, Cholesterol, Fatty Acid Composition and more
- Vitamins A, C, D & E**
- Mycotoxin/Mold Analysis** - Aflatoxin, Vomitoxin, F-2 Toxin, Fumonisin, Mold & Yeast Count, and Mold Identification
- Bacteriological Analysis** – Std Plate Count, Total Coliforms, E. Coli, Listeria and Salmonella
- Biological Samples** including Blood, Serum, Tissue and Liver Biopsies
- Pesticides by Gas Chromatography** including chlorinated, organo-phosphates and all other common pesticides (including Lasso, Atrazine, Butachlor, Bravo, Dual, Sencor, Prowl, Ramrod, Treflan)
- Pesticides by ELISA** including 2,4-D, Atrazine, Paraquat
- Organic Acids** such as Acetic, Butyric, Lactic, Propionic and Valeric Acids, plus Ethanol and Ethylene Glycol
- Fertilizer Analysis** for Total Nitrogen, Ammonia, Nitrate, Urea, Phosphorus, Potassium and Sulfur
- Manure Analysis** including Dry Matter, Nitrogen, Phosphorus, Potassium, Ash, pH, Minerals, etc.



Wichita Facility  
2626 South Rock Rd., Suite 124  
Wichita, Kansas 67210  
316-618-8787

Mound Valley Corporate Office  
111 East 5<sup>th</sup> Street  
Mound Valley, Kansas 67354  
620-328-3222



## Precision Agriculture & Variable Rate Technology (VRT)

Up to 60% of crop yield depends on soil fertility. Precision agriculture allows the grower to precisely manage the application of fertilizer components. Your variable nutrient addition strategy relies on quality soil testing.



Meridian Labs can assist you with this key step. The following standard soil testing packages are available to screen your soil for fertility and amendment requirements:

### Soil Testing Services Include:

**S-1 NPK** includes pH, Buffer pH, Sum of Cations (CEC), Soluble Salts, Potassium, Nitrate-Nitrogen, Calcium, Phosphorus, Magnesium & Sodium

**S-1A NPK Organic Matter, CEC & S** - pH, Buffer pH, Sum of Cations (CEC), Sulfur, Soluble Salts, Potassium, Organic Matter, Calcium, Nitrate-N, Magnesium, Phosphorus & Sodium

**S-4 Routine** pH, Buffer pH, Sum of Cations (CEC), Sulfur, Soluble Salts, Potassium, Zinc, Organic Matter, Calcium, Iron, Nitrate-N, Magnesium, Manganese, Phosphorus, Sodium & Copper

**S-4 Cl** includes Routine(S-4) plus Chloride

**S-5 Complete** consists of pH, Buffer pH, Sum of Cations (CEC), Sulfur, Soluble Salts, Potassium, Zinc, Organic Matter, Calcium, Iron, Nitrate-N, Magnesium, Manganese, Phosphorus, Sodium, Copper & Boron

**S-5 Cl** includes Complete(S-5) Plus Chloride

**S-7 Alfalfa/Clover Package** pH, Buffer pH, Sum of Cations (CEC), Sulfur, Soluble Salts, Potassium, Boron, Organic Matter, Calcium, Nitrate-N, Magnesium, Phosphorus and Sodium

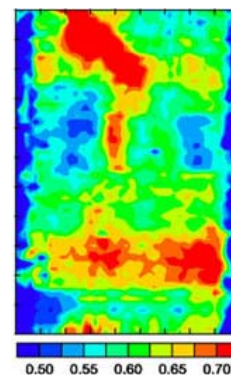
**S-8 Corn Package** pH, Buffer pH, Sum of Cations (CEC), Sulfur, Soluble Salts, Potassium, Zinc, Organic Matter, Calcium, Nitrate-N, Magnesium, Phosphorus & Sodium

### S-9 Sub-Soil Nitrate

**S-9A** includes Sub-Soil Nitrate (S-9) plus Sulfur

**S-10 Salinity (Saturated Paste Extract)** includes SAR Saturation %, Sulfur, Electrical Conductivity, Calcium, Bicarbonate, Chloride, Magnesium, pH and Sodium

**S-11** includes Salinity (S-10) plus EC: SAR Saturation %, Electrical Conductivity, Calcium, Magnesium and Sodium



Grid Sample Pricing available upon request. Contact Duane at 620-328-3222.



Wichita Facility  
2626 South Rock Rd., Suite 124  
Wichita, Kansas 67210  
316-618-8787

Mound Valley Corporate Office  
111 East 5<sup>th</sup> Street  
Mound Valley, Kansas 67354  
620-328-3222